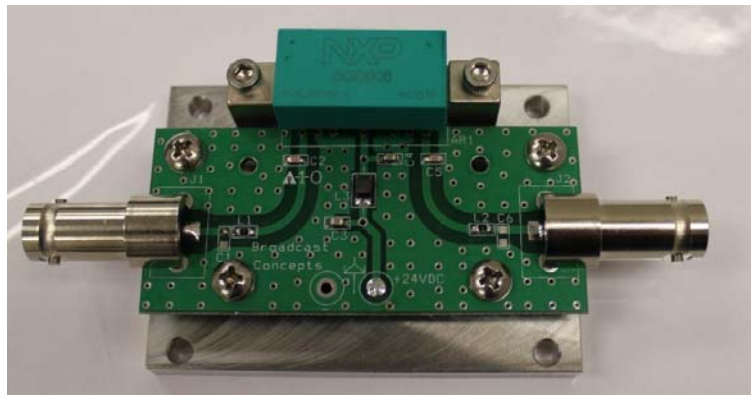


## Model CGD1042LA1 Linear Lab Amplifier Module

This amplifier module is ideal for driver stages in analog and digital TV broadcast equipment.

- 50– 1000MHz
- 24 volts
- Analog Peak sync 1W
- 0.4 W 8VSB digital
- 0.25W DVB digital
- BNC Connectors
- 50/75 ohms
- VSWR Immune
- Ideal for boosting the source power of network analyzers and signal generators.
- Class A
- NXP CGD1042H RF Module

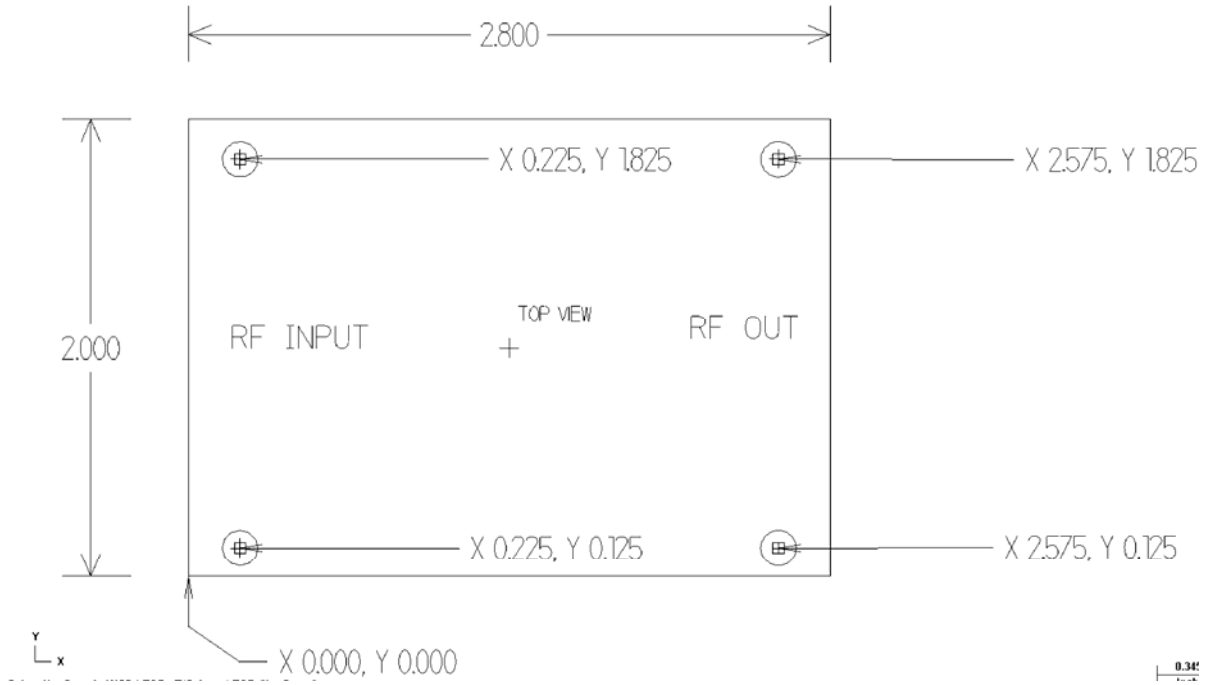
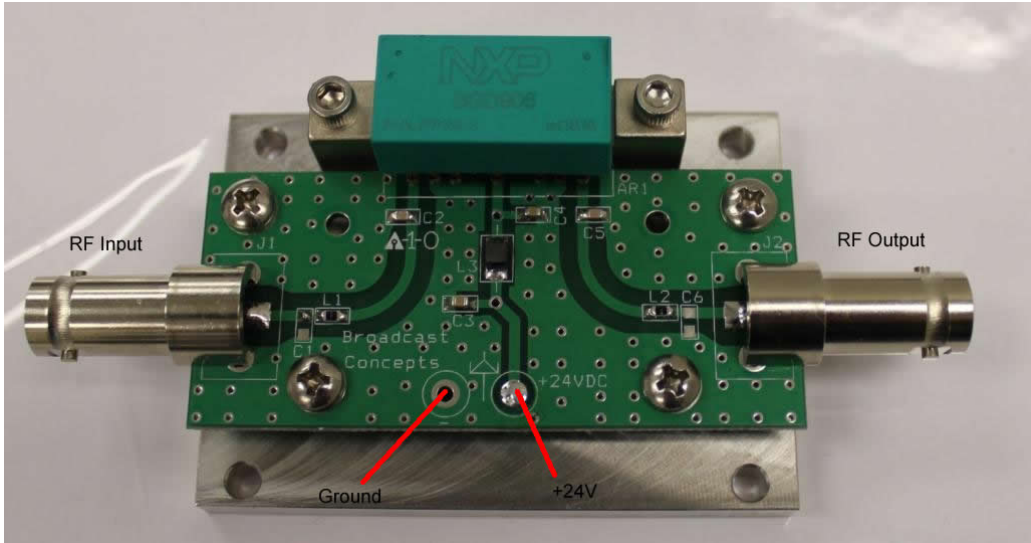


Dimension (L x W x H inch) [4.3" x 2.0" x 1.1"]

Electrical Specifications				
Characteristics	min	typ	max	unit
Operating Frequency range	50		1000	MHz
Analog TV peak sync	750	1000	n/a	mw
8VSB Digital	350	400	n/a	mw
DVB Digital	200	250	n/a	mw
Power Input	n/a	7	15	dbm
Input Return loss	-10	-15	n/a	RL
Power Gain	21	21.5	23	dB
Current @ 24V	430	450	470	ma dc
Supply Voltage***	24	24	30	V dc

\*\*\*Operation above 24V will shorten module service life.

Electrical Connections and mechanical drawings



## Heatsink Mounting/Hardware

### Tips for Mechanical Mounting:

- 1 The 4 mounting holes are 0.156 inch thru and they are deigned for a #6 Screw. Stainless Steel mounting hardware is recommended, grade 18-8 or better. A lock washer of same material should also be used.
- 2 Ensure mounting surface is flat to better than 0.0025"
- 3 Use a thin layer of thermal compound on the backside of the PA - no more than 0.001" - 0.002" thickness!
- 4 Torque all screws to 10-12 in-lbs.
- 5 Base plate is ¼ thick 6061 aluminum
- 6 All dimensions are in inches.

Warning: Failure to use a proper heat sink will cause the RF module to burn out. This type of failure is not covered by warranty. This product can be ordered with a custom heat sink. Please contact factory for more information.