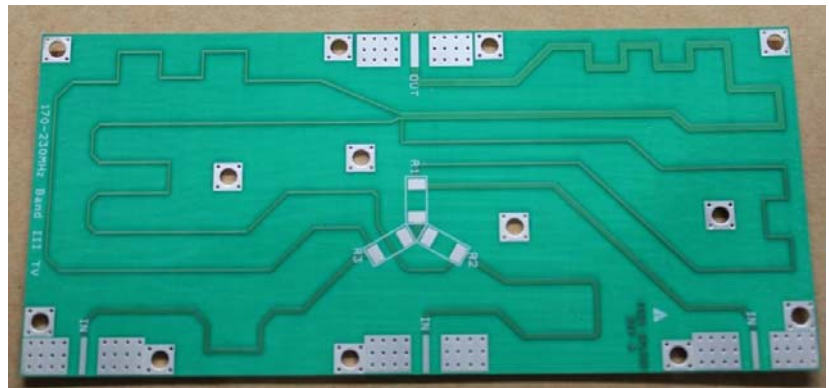


Model TV3-SPL30: 3 way TV BAND III 170-230MHz Splitter/Combiner PCB

This combiner PCB is ideally suited for input power splitting for high gain LDMOS amplifiers in digital and analog applications.

- 170-230 MHz (CH 7-13)
- Up to 30 watts at common port
- Includes RF resistors (not shown)
- Available in milled housing
- Mounting hardware (4-40 screws)
- Controlled DK PTFE circuit board.
- Broadband not tune design.

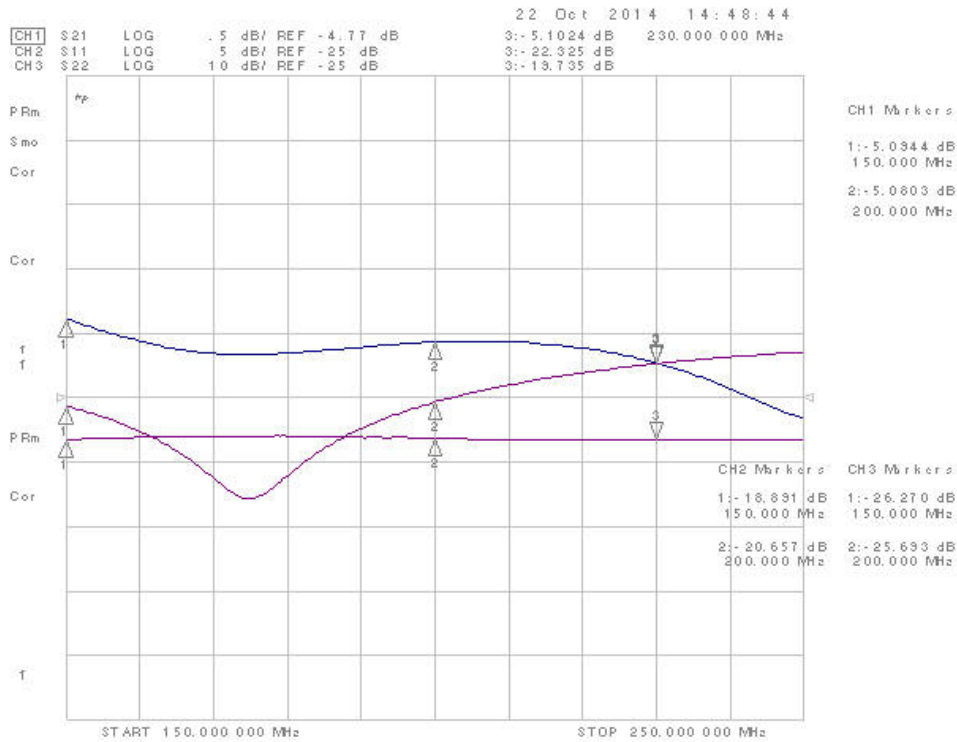


Dimension (L x W x H inch) [5.5" x 2.5" x .025"]

Electrical Specifications				
Characteristics	min	typ	max	unit
Operating Frequency range	170	-	230	MHz
Analog TV peak sync	-	-	75	Watts
8VSB Digital	-	-	30	Watts
DVB Digital	-	-	30	Watts
Input ports (3) return loss	-	-25	-18	dB
Common Port Return loss	-	-20	-19	dB
Insertion loss S12/S21**	-4.9	-5.0	-5.15	dB
Port to port isolation	20	25	25	dB
Phase unbalance	-	-	2	degree

**Note: The ideal loss of a 3 way combiner is -4.77dB.

8753ES Network Analyzer plots: (S-parameters can be downloaded from the main product page)



Port 1: Blue trace is return loss of common port.

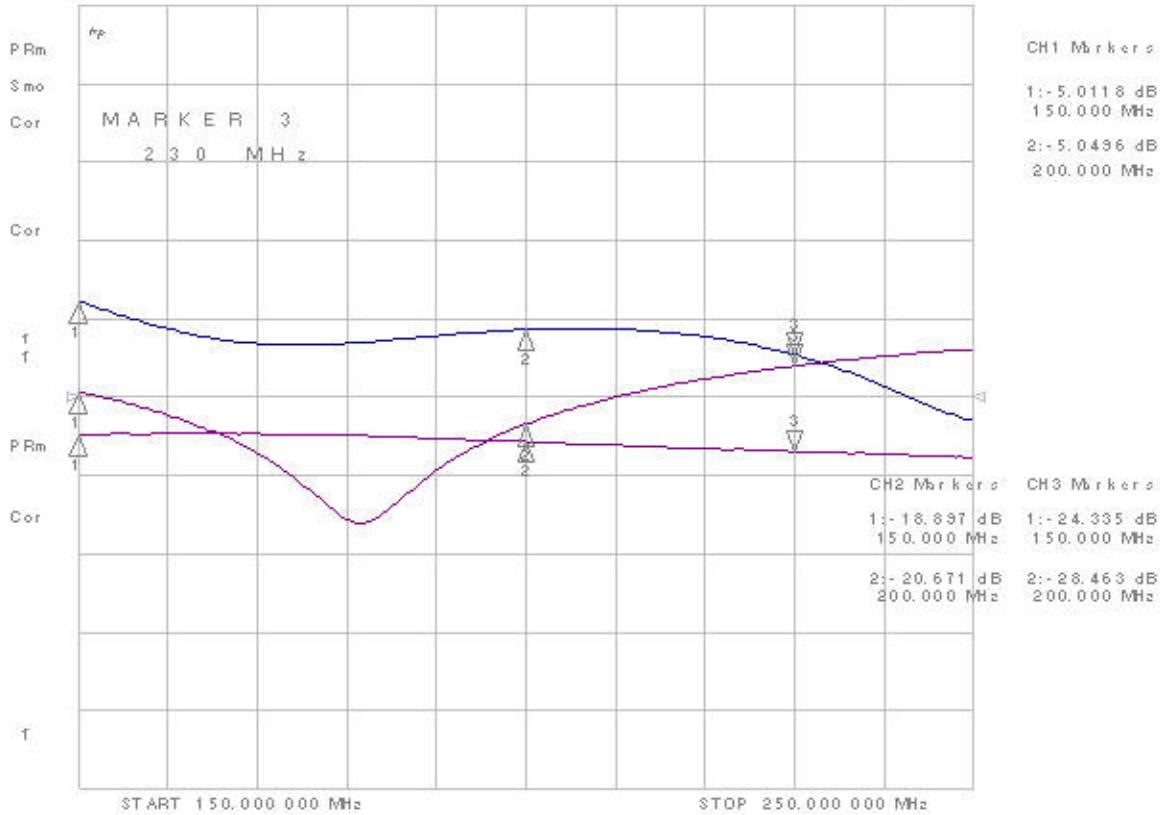


Port 2: Blue trace is return loss of common port.

22 Oct 2014 14:42:56

CH1 S21 LOG .5 dB/ REF -4.77 dB
 CH2 S11 LOG 5 dB/ REF -25 dB
 CH3 S22 LOG 10 dB/ REF -25 dB

3:- 5.1169 dB 230.000 000 MHz
 3:- 22.323 dB
 3:- 21.021 dB



Port 3: Blue trace is return loss of common port.