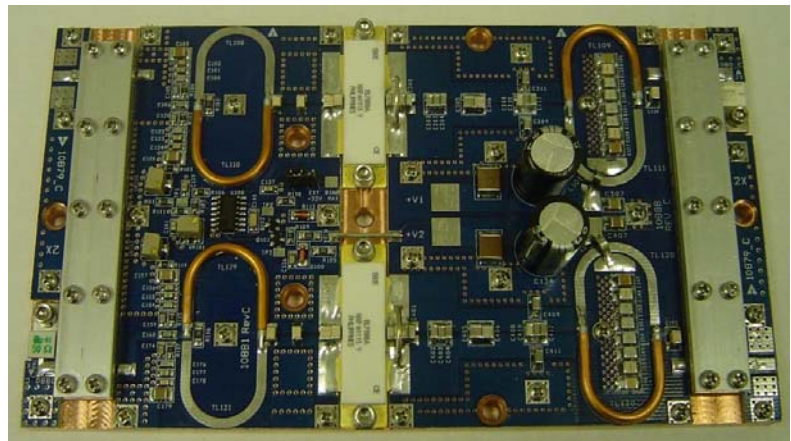


Model UHFTV-350D-18 TV Pallet Amplifier Module

This amplifier module is ideal for final output stages in analog and digital TV broadcast equipment.

- 470– 860MHz
- 50 Volts
- Pout: 800W Peak Sync analog**
- 350W 8VSB digital
- 240W DVB digital
- Thermal Tracking Bias
- Copper Alloy 145 ¼ in. base plate
- BLF888A NXP Devices

** (470-680MHz only)



Dimension (L x W x H inch) [6.64" x 3.8" x 1.25"]

Absolute Maximum Ratings			
Symbol	Parameter	Value	Unit
Vs	Drain voltage supply	50	V DC
Idc	Drain Current (sum of both mosfets)	26	A dc
VSWR	Load Mismatch (All phase angles, Id=26A)	10 to 1	
Tc	Base plate operating temperature	-20 to +70C	Celsius
RF IN	RF Input	4.5	Watts
RF OUT	RF Output CW (pallet is not designed to run in CW)	400	Watts

Electrical Specifications				
Characteristics	min	typ	max	unit
Operating Frequency range	470		860	MHz
Analog peak sync pwr 470-680MHz	700	750	800	W
Analog peak sync pwr 680-860MHz	600	675	700	W
Power Input	n/a	3.0	4.5	W
Input Return loss	-16	-20	n/a	RL
Power Gain	16	18		dB
Collector Efficiency (8VSB mod)		33		%
Collector Current (350W 8VSB)		22		A dc
Supply Voltage	50	50	n/a	V dc
Insertion Phase variation (unit to unit)		+/-5.0		degrees
Power gain (unit to unit)		+/-0.75		dB
Two Tone IMD; 600W 5MHz Spacing	-40	-40	n/a	dBc
F2 Second Harmonic		-20dB		dB
F3 Third Harmonic		-25dB		dB
Bias Current: Factory set to 1.4A ea mosfet @50V. (2.8A total)	1.3	1.4	1.5	A dc