

VHF-B3 COAXIAL SPLITTERS

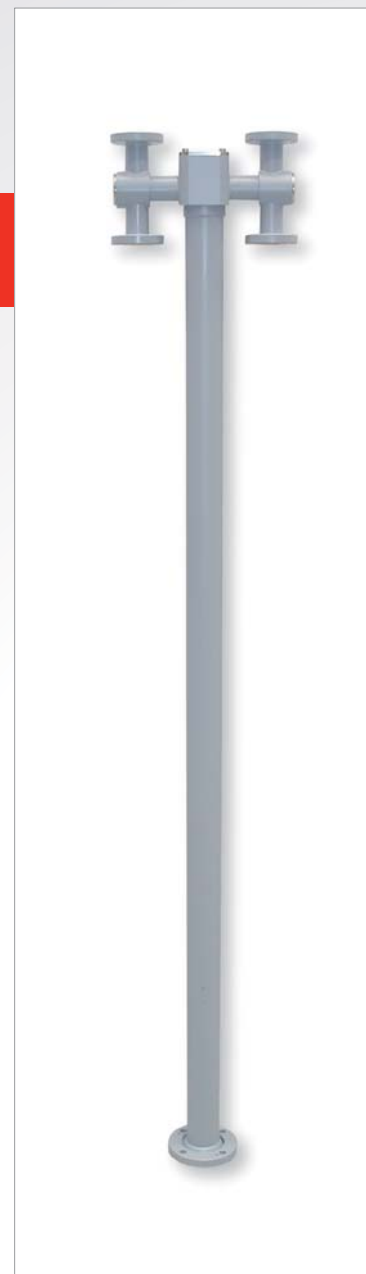
FEATURES

- broadband power dividers
- low insertion loss
- low V.S.W.R
- available unbalanced power dividers

GENERAL FEATURES

FREQUENCY RANGE	174 ÷ 230 MHz
IMPEDANCE	50 ohm
RETURN LOSS (typical)	≥ 32 dB with outputs ≥ 7/8" size ≥ 28 dB with outputs 7/16 F size
POWER RATING *	See table
OPERATING TEMPERATURE RANGE	-40 ÷ +70° C
CONNECTORS	See table
NUMBER OF WAYS	See table
WEIGHT	See table
PRESSURIZATION	Typical operating pressure 300hPa (300mBar)
MATERIALS	- External body Polished copper, polished brass
	- Inner conductor Silver plated brass, polished brass, deoxidized aluminium
	- Insulator Teflon
EXTERNAL FINISHING	Painted Ral 7001, Nickel plating

* mean power , ambient temperature 40° C , atmosphere pressure, dry air



STANDARD TYPES

TYPE	INPUT CONNECTOR	OUTPUT CONNECTORS		DIMENSIONS			POWER RATING (kW)			WEIGHT (kg)	FIGURE
		Nr.	TYPE	A (mm)	B (mm)	C (Ømm)	174 MHz	202 MHz	230 MHz		
RBT-72	7/16 F	2	7/16 F	1209	90.5	25	3.2	3	2.8	3.5	1
RBT-73*	7/16 F	3	7/16 F	1209	138	25	3.2	2.9	2.6	4	1
RBT-02	7/8" EIA	2	7/8" EIA	1261	148	25	5.7	5.3	5	5	3
RBT-03	7/8" EIA	3	7/8" EIA	1261	206	25	5.7	5.3	5	5.5	3
RBT-04	7/8" EIA	4	7/8" EIA	1261	206	25	5.7	5.3	5	6	3
RBT-05	7/8" EIA	5	7/8" EIA	1282	206	41.8	5.7	5.3	5	8.5	3
RBT-06	7/8" EIA	6	7/8" EIA	1282	206	41.8	5.7	5.3	5	9	3
RBT-08	7/8" EIA	8	7/8" EIA	1261	206	41.8	5.7	5.3	5	12	3

* up to 254 MHz

VHF-B3 COAXIAL SPLITTERS

figure "1"

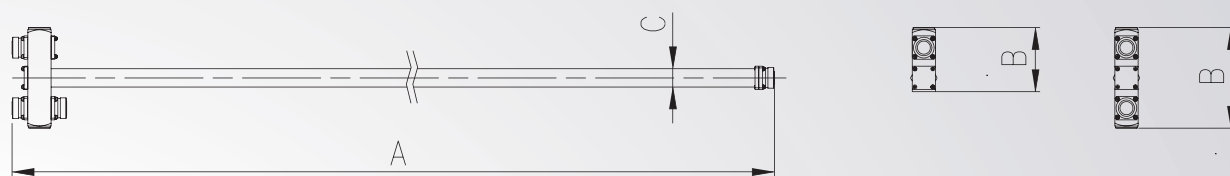


figure "2"

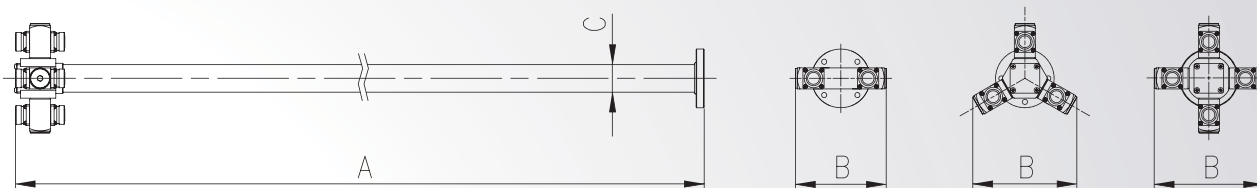
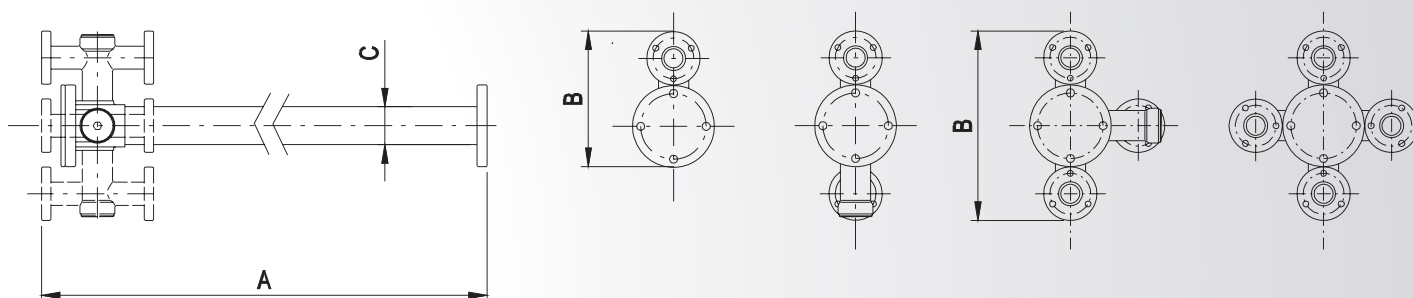


figure "3"



STANDARD TYPES

TYPE	INPUT CONNECTOR	OUTPUT CONNECTORS		DIMENSIONS			POWER RATING (kW)			WEIGHT (kg)	FIGURE
		Nr.	TYPE	A (mm)	B (mm)	C (Ømm)	174 MHz	202 MHz	230 MHz		
RBT-64*	1-5/8" EIA	4	7/16 F	1244	138	41.8	12.8	11.8	11.2	6	2
RBT-66*	1-5/8" EIA	6	7/16 F	1238	158	41.8	13.2	12.2	11.6	6.5	2
RBT-68*	1-5/8" EIA	8	7/16 F	1238	166	41.8	13.2	12.2	11.6	7.5	2
RBT-12	1-5/8" EIA	2	7/8" EIA	1261	148	41.8	11.4	10.6	10	6	3
RBT-13	1-5/8" EIA	3	7/8" EIA	1261	206	41.8	13.2	12.2	11.6	7	3
RBT-14	1-5/8" EIA	4	7/8" EIA	1261	206	41.8	13.2	12.2	11.6	7.5	3
RBT-15	1-5/8" EIA	5	7/8" EIA	1261	206	41.8	13.2	12.2	11.6	8	3
RBT-16	1-5/8" EIA	6	7/8" EIA	1261	206	41.8	13.2	12.2	11.6	9	3
RBT-18	1-5/8" EIA	8	7/8" EIA	1261	206	41.8	13.2	12.2	11.6	10	3
RBT-144	3-1/8" EIA	4	7/8" EIA	1185	248	79.4	22.8	21.2	20	14	3
RBT-145	3-1/8" EIA	5	7/8" EIA	1185	248	79.4	28.5	26.5	25	15	3
RBT-146	3-1/8" EIA	6	7/8" EIA	1185	248	79.4	34.2	31.8	30	16	3
RBT-148	3-1/8" EIA	8	7/8" EIA	1185	248	79.4	39	36	33	18	3
RBT-22	3-1/8" EIA	2	1-5/8" EIA	1277	309	79.4	26	24	23	15.5	3
RBT-23	3-1/8" EIA	3	1-5/8" EIA	1277	309	79.4	39	36	33	16	3
RBT-24	3-1/8" EIA	4	1-5/8" EIA	1277	309	79.4	39	36	33	17	3
RBT-25	3-1/8" EIA	5	1-5/8" EIA	1277	280	79.4	39	36	33	19	3
RBT-295	4-1/2" EIA	5	1-5/8" EIA	1277	349	106	59	55	52	20	3
RBT-296	4-1/2" EIA	6	1-5/8" EIA	1277	314	106	59	55	52	21	3

* up to 254 MHz